

PART OF THE N. 1/2, SEC. 28, T.7N., R.1E., S.L.B. & M.

102

NIPKO ESTATES

IN WEBER COUNTY

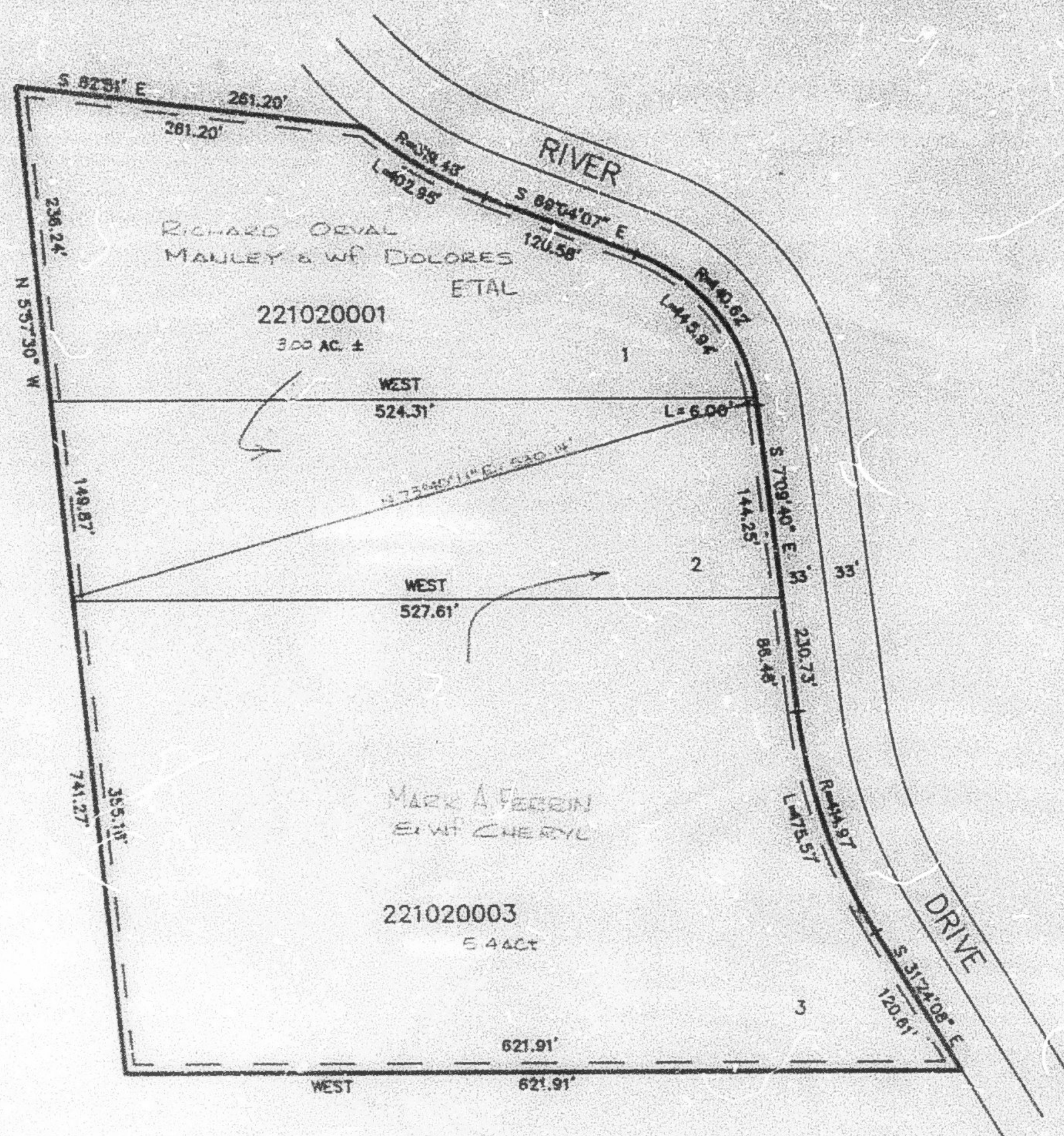
SCALE 1" = 100'

TAXING UNIT: 36

SEE PAGE 22

SEE PAGE 22

SEE PAGE 22



SEE PAGE 22

7' UTILITY & DRAINAGE EASEMENTS EACH
SIDE OF PROPERTY LINES AS INDICATED BY
DASHED LINES, EXCEPT AS OTHERWISE SHOWN.

FOR COMPLETE PNC DATA SEE
ORIGINAL DEDICATION PLAT IN
BOOK 31, PAGE 5 OF RECORDS.